

GE Healthcare

# Senographe Care

A landmark in breast care





# Senographe Care

With careful attention to a women's health, from low-dose imaging to an innovative, interactive approach to mammography, Senographe\* Care helps you redefine the patient experience. Senographe Care is durable and reliable. But we also designed it to deliver consistently outstanding image quality, so you can perform a wide variety of breast procedures in settings from in-office to mobile screening.

---

Image quality.  
Clearly excellent.

---

Get it right to  
work. And fast.

---

We called it  
Senographe Care  
for a reason.



# Image quality. Clearly excellent.

Senographe Care lets you confidently detect and characterize mammographic findings. Every component – from tube to detector to post-processing – contributes to outstanding image quality. But you all have your own preferences. Some like sharper images, some smoother. Now with eContrast your Senographe Care lets you select from 6 image flavors to adapt to the breast or your preference.

## Six contrasts levels. Your images the way you like them.

Breasts differ, and so do clinicians' viewing preferences. eContrast lets you improve structure visibility for almost any breast type, including implants and stereo images. You can choose among six contrast levels, the setting that optimizes your visual comfort and diagnostic performance. And that's not all – eContrast improves the image on spot views because the display is optimized for the region under the paddle.

## Efficient imaging at low dose

An independent conversion detector with a Cesium-Iodide (CsI) scintillator on an amorphous Silicon (a-Si) flat-panel array results in a high DQE (70%\*\*) for efficient imaging at low dose.

## Repeatable image quality at optimized radiation dose

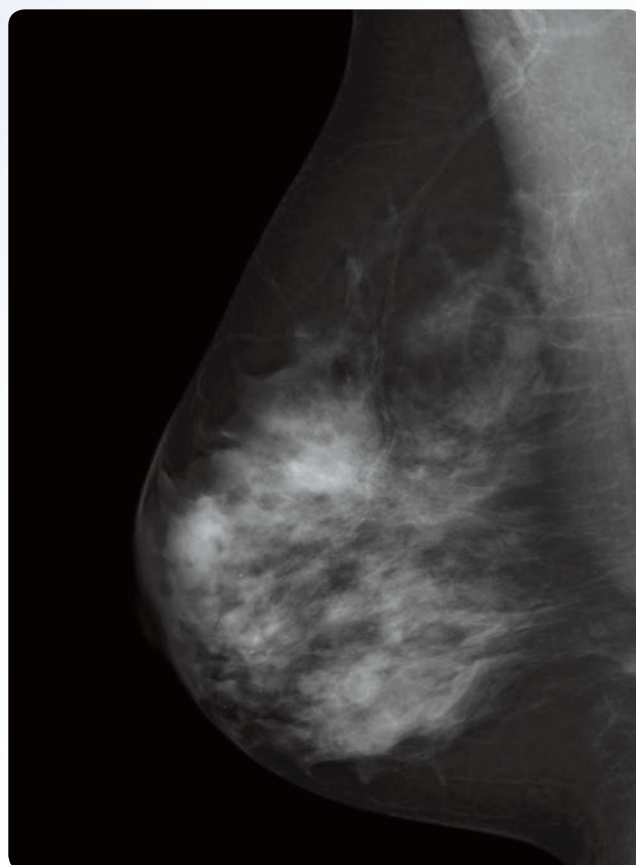
A dual-track X-ray tube (Mo/Rh) delivers an optimal X-ray spectrum to penetrate the breast based on breast density and compressed breast thickness. Automatic Optimization of Parameters (AOP) helps you identify the densest breast regions. It automatically selects the appropriate anode, filter, kV and mAs, ensuring repeatable image quality at optimized radiation dose.



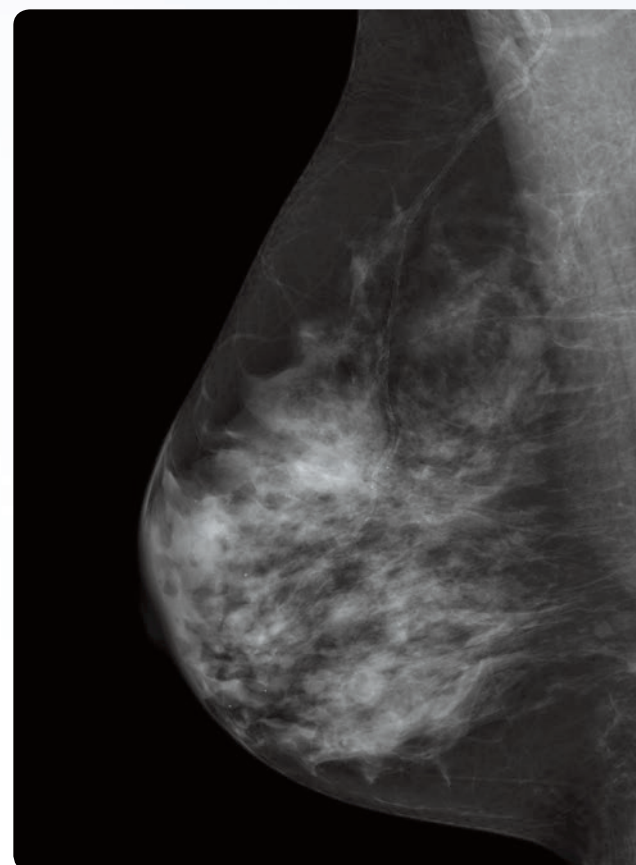
GE Healthcare's IDI MammoWorkstation lets you review your mammography images and other breast imaging modalities with confidence.



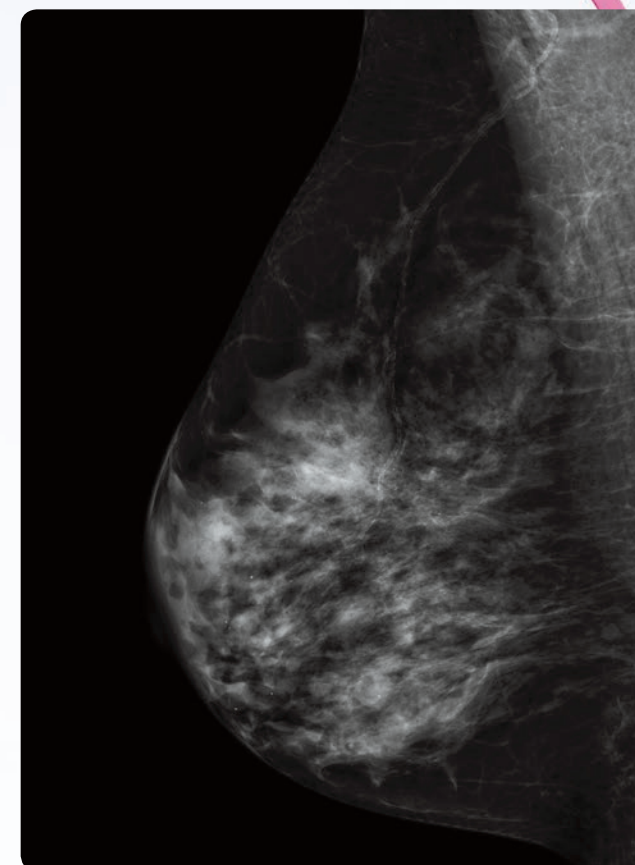




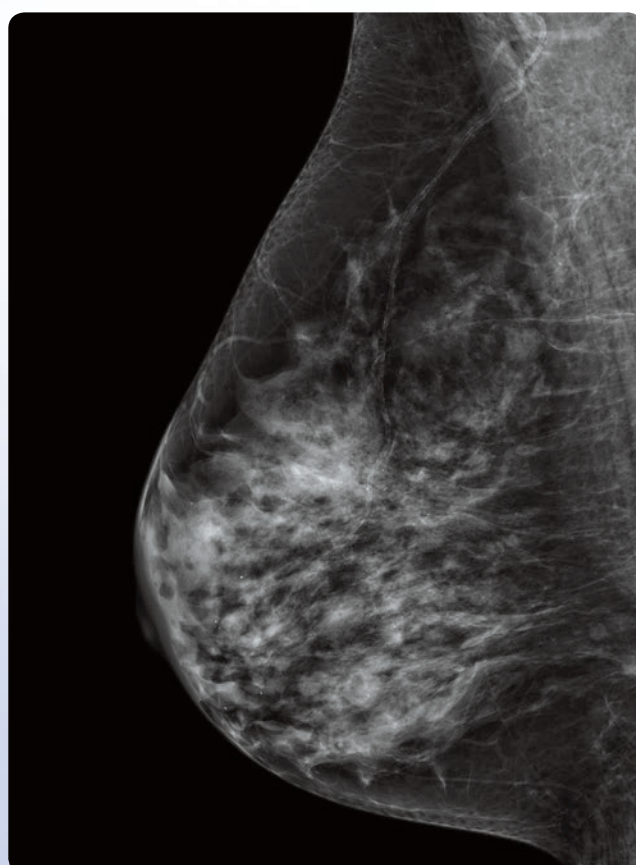
eContrast 1



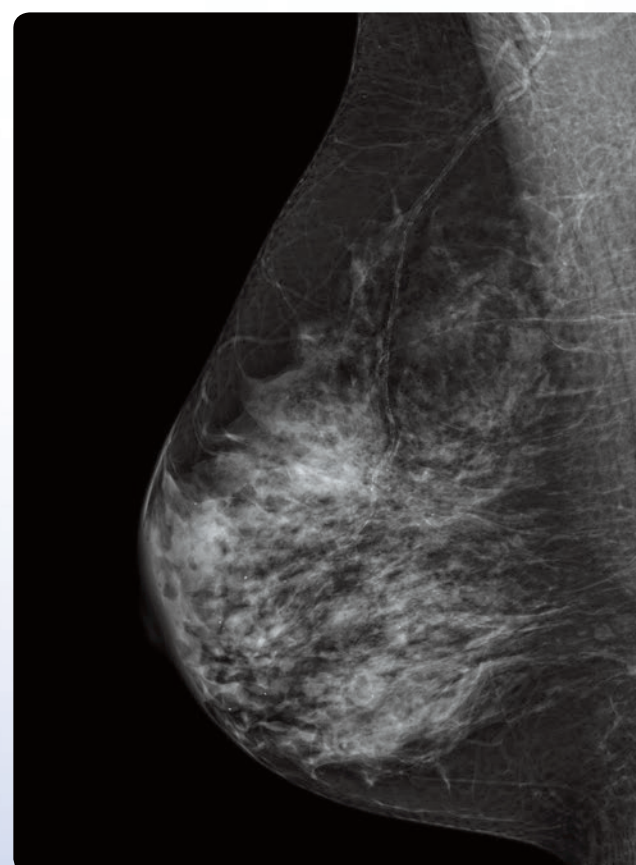
eContrast 2



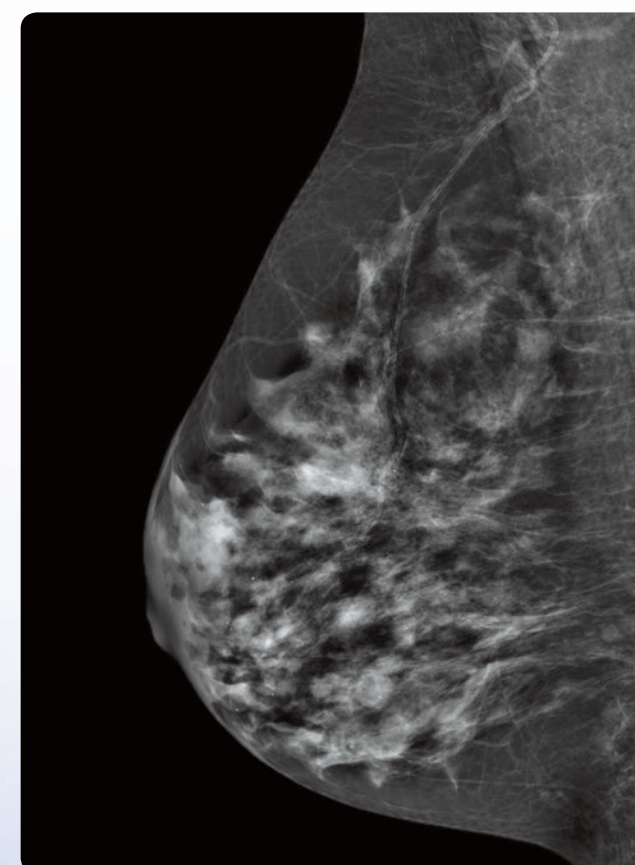
eContrast 3



eContrast 4



eContrast 5



eContrast 6

6 contrasts  
levels.  
Your images  
the way you  
like them.



# Get it right to work. And fast.

The industry's largest field of view. Fast access to priors. Easy and quick patient positioning with automatic gantry rotation and quick angle setting. Together, these features give you remarkable flexibility and performance.

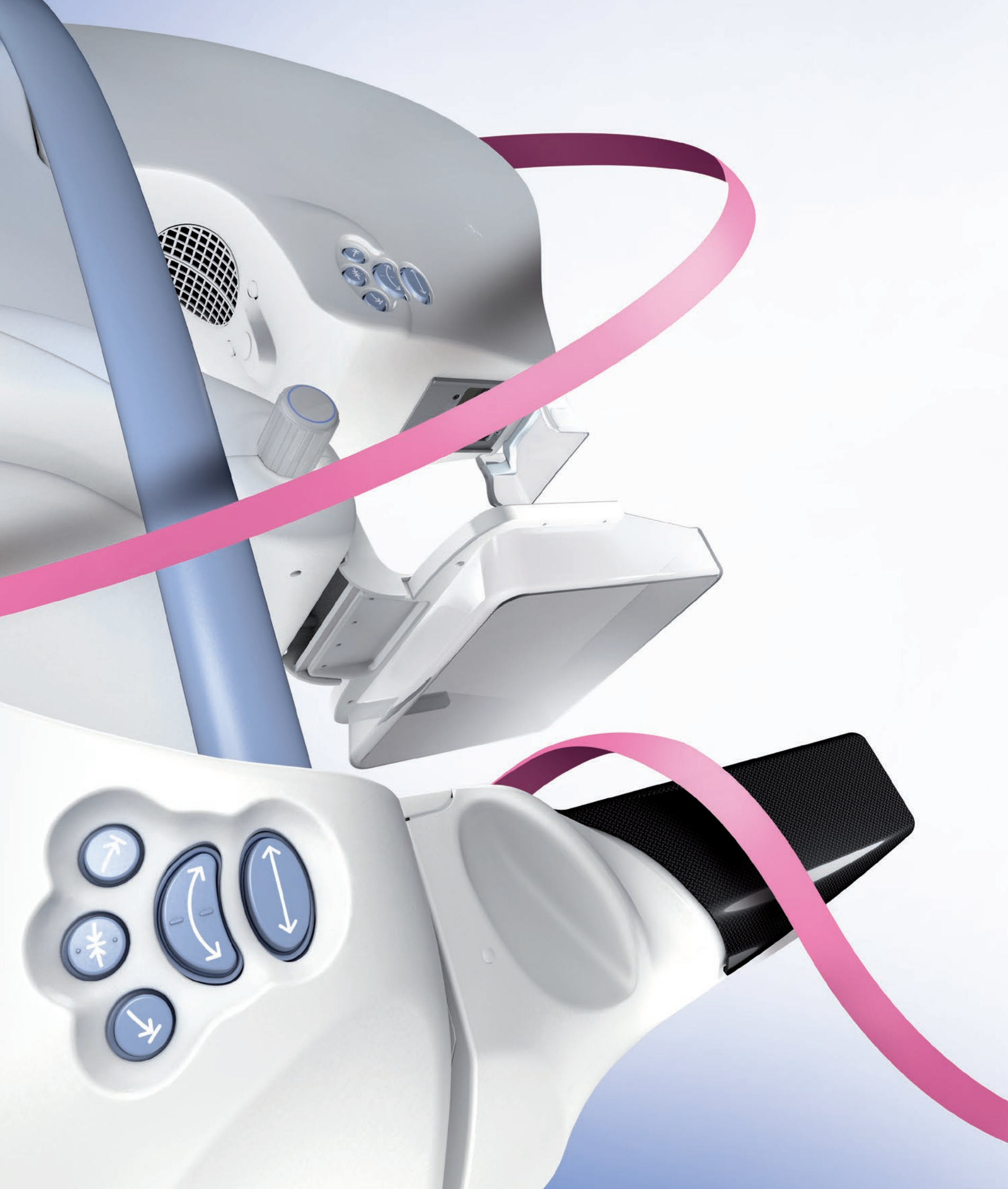
## Speed up your workflow

- The Senographe Care digital detector offers the industry's largest field of view (24 x 31 cm). It also lets you choose a standard 19 x 23 cm field of view, so you can image a wide range of breast sizes.
- Technologist-focused design allows easy and quick patient positioning: Pre-set gantry positioning enables automatic gantry rotation and quick angle setting.
- TechInsight functionality provides fast access to priors and gives accurate indications to the technologist regarding breast positioning.

## Proven performance

- 80% of contracted detectors manufactured in 1999 were still in service in 2010\*\*\*.
- The iLinq\* system gives you online access to a technical expert, through your equipment console, to solve procedural or processing issues in real time.





# We called it Senographe Care for a reason.

Careful attention to a woman's health – from low-dose imaging to an innovative, interactive approach to mammography – lets you redefine the patient experience.

## Low dose by design

- The detector provides high DQE with independent conversion technology for efficient imaging at low dose.
- The GE AOP automatic exposure mode, based on breast density, delivers optimized and consistent image quality while minimizing average glandular dose.
- The X-ray tube, with exclusive rhodium anode, provides a high-purity spectrum for optimum contrast at low dose for dense breasts.

## Experience SensorySuite (Optional)

SensorySuite\* is an interactive experience designed to stimulate the senses and distract patients from discomfort, pain, or anxiety they may experience during a mammogram. Each patient chooses the environmental ambiance she prefers – Seaside, Garden, or Waterfall – using an in-room tablet PC remote control. The pleasant sounds and images may improve your patients' experience and enhance the high level of patient care you provide.

## Ergonomics that work

- Ergonomic breast handles help reduce patient muscle contraction.
- Ergonomic paddle design and rounded bucky shape help optimize patient comfort.
- Maximum desired compression can be pre-set; compression slows when contacting the breast, enhancing patient comfort.





## About GE Healthcare

GE Healthcare provides transformational medical technologies and services that are shaping a new age of patient care. Our broad expertise in medical imaging and information technologies, medical diagnostics, patient monitoring systems, drug discovery, biopharmaceutical manufacturing technologies, performance improvement and performance solutions services help our customers to deliver better care to more people around the world at a lower cost. In addition, we partner with healthcare leaders, striving to leverage the global policy change necessary to implement a successful shift to sustainable healthcare systems.

Our “healthymagination” vision for the future invites the world to join us on our journey as we continuously develop innovations focused on reducing costs, increasing access and improving quality around the world. Headquartered in the United Kingdom, GE Healthcare is a unit of General Electric Company (NYSE: GE). Worldwide, GE Healthcare employees are committed to serving healthcare professionals and their patients in more than 100 countries. For more information about GE Healthcare, visit our website at [www.gehealthcare.com](http://www.gehealthcare.com).

GE Healthcare  
Chalfont St.Giles,  
Buckinghamshire,  
UK



GE Healthcare, Europe  
Headquarters Buc, France  
+33 800 90 87 19

GE Healthcare, Middle East and Africa  
Istanbul, Turkey  
+ 90 212 36 62 900

GE Healthcare, North America  
Milwaukee, USA  
+ 1 866 281 7545

GE Healthcare, Latin America  
Sao Paulo, Brazil  
+ 55 800 122 345

GE Healthcare, Asia Pacific  
Tokyo, Japan  
+ 81 42 585 5111

GE Healthcare, ASEAN  
Singapore  
+65 6291 8528

GE Healthcare, China  
Beijing, China  
+ 86 800 810 8188

GE Healthcare, India  
Bangalore, India  
+91 800 209 9003



GE imagination at work

Data subject to change.  
Marketing Communications GE Medical Systems  
Société en Commandite Simple au capital de 85.418.040 Euros  
283 rue de la Minière – 78533 Buc Cedex France  
RCS Versailles B 315 013 359  
A General Electric company, doing business as GE Healthcare

GE and GE Monogram are trademarks of General Electric Company.

\* Trademarks of General Electric Company.

All third party trademarks are the property of their respective owner.

©2013 General Electric Company. All rights reserved.  
HCS DGS BC MC 01141 JB17928JA